

# Irrigation – Pumping Systems – Water Harvesting and Storage

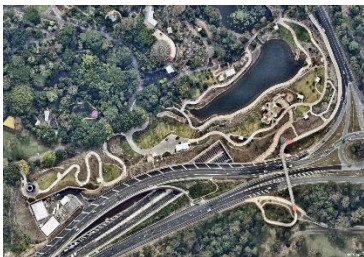


Water Equipment Technology

DESIGN

CONSULTANCY

CONTRACT OVERSIGHT



## **CONTENTS**

<u>Introduction</u>	3
<u>About Us</u>	4
<u>Our Services</u>	5
<u>Projects</u>	5
<u>Design and installation of irrigation systems</u>	6
<u>Pumping Applications</u>	7
<u>Water Management – Harvesting &amp; Storage</u>	8
<u>Water Management – Lake Management &amp; Aeration</u>	9
<u>Maintenance</u>	10
<u>Our Customers</u>	10
<u>Our Suppliers</u>	11
<u>Affiliations &amp; Partnerships</u>	11
<u>Health and Safety</u>	12
<u>Our Company</u>	12
<u>Our people</u>	12
<u>Contact Information</u>	14





## INTRODUCTION

---

It is my pleasure to introduce you to Water Equipment Technology.

Client satisfaction is our number one priority and we are committed to delivering outstanding results, by means of our trademark 'Can Do' approach and well known ability to provide innovative and leading-edge products.

Water Equipment Technology sets its self apart from our competitors through our specialised knowledge in irrigation design, Consultancy and contract management.

Our expertise encompasses, amongst others, Local and State Government, Commerce, Mining Industry, Agricultural, Education, Sport & Recreation sectors.

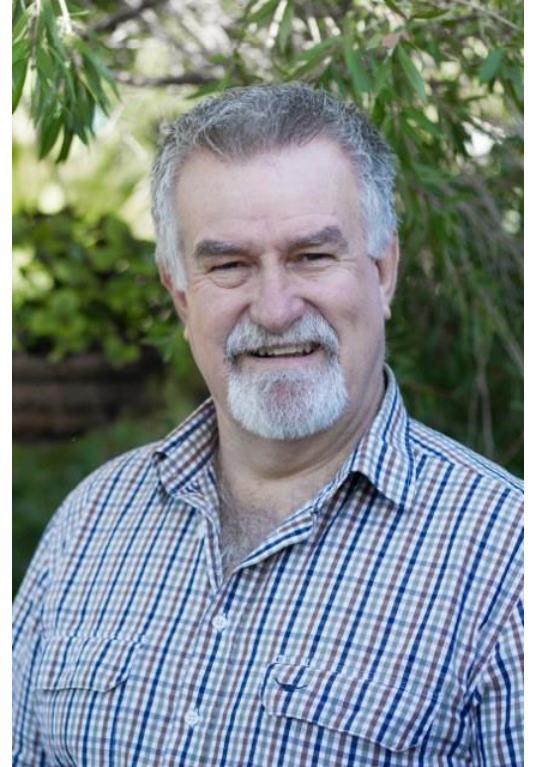
If you are an existing customer, then I thank you for your support and if you are a potential client, I hope you are encouraged by the examples of some of our work history portrayed in the following pages.

Our team is committed to a total performance approach and I am always personally available to reinforce that commitment to you.

Regards

Ben Chapman  
Managing Director

---



“Our strong brand,  
is built upon long lasting relationships  
based on performance and trust”

---



## *The intelligent use of water*

### ABOUT US

---

Water Equipment Technology (WET), a Queensland, Australia & Singapore based company, has earned an industry reputation in maintaining high standards in design, construction oversight & delivery for pumping and irrigation systems.

WET offers a complete water management solution from concept stage, scheme and detailed design & planning all the way through to construction & project management.

Our objective is to work within the environment with zero tolerance towards harming it. In fact, being water focused, our activities enhance and protect the environment while supporting business goals.

WET's abilities have been recognised by a steady stream of clients in Local & State Government, commerce, mining industry, education, sport & recreation.

WET's record in major projects has seen us deliver on time and on budget.

With qualifications and over 35 years of experience in the industry, our owner Ben Chapman can

When it comes to water, we **locate** it, **harvest** it, **clean** it, **treat** it, **pump** it, **transport** it, **irrigate** with it and we **drink** it.

offer detailed technical knowledge to design & offer solutions to the most complex irrigation, pumping and water management projects

“Our vision is to be the choice provider  
of Water Management Solutions”

Our company is driven by our values.  
We proudly back the quality of our goods and services.

## Our Services

---

### Projects – Design

Increasingly complex installations, growing customer needs and demanding requirements have lead to a heightened need to develop comprehensive concepts that deliver.

- Value for money
- Fit for Purpose Products
- Innovative Solutions
- Effective Project Management
- Meet Time Constraint
- Market Sectors
- Local and State Government
- Mining Industry
- Education Facilities
- Sport and Recreation



---

*Ben has a Diploma in Irrigation and is a Certified Irrigation Designer (CID)*

### Experience

- Design and Consulting
- Installation oversight in;
  - Irrigation Systems
  - Pumping Stations
  - Water Harvesting and Storage
  - Stadiums, golf course & race tracks
  - Pond and Lake Treatment and Aeration
  - Electro Fusion and Butt Welding

### Project Scope

\$1,000.00 - \$12,000,000.00

Our clients come to us for our original ideas and ability to problem solve.

We provide effective and efficient project management utilising quality materials and latest technologies.

The combination of accumulated years of experience and creative application, is why clients consistently turn to Water Equipment Technology for advice and guidance. Our design team has an in-depth understanding of water management applications we provide.

## Our Services

### **Design and Installation – Irrigation Systems**

Water Equipment Technology has been providing water management solutions for over 35 years and have developed a strong knowledge base for all things water.

Our team undertakes irrigation projects on small, medium and large scale projects.

Our specialist team design new automatic irrigation systems or can upgrade & refurbish your existing system. WET offers designs for DIY installation, supply and installation, project management, maintenance contracts or troubleshooting and repairs as required.

### **Scope**

- Parks and Recreational Facilities
- Sports Fields and Golf Courses
- Centre Pivots and Lateral Moves
- Race Courses
- Residential Development
- Dust Suppression
- Mining Camp Effluent Dispersal Systems
- Pond Underliner Seepage Extraction Pumping System

**Our team always  
leaves a worksite  
better than we find  
them...**





## Our Services

### **Pumping Applications**

- High pressure, high flow electric pumping systems
- High pressure, high flow diesel powered pumping system for large agricultural systems
- De-watering, using very high flow, low pressure diesel powered pumping systems for mines and flow control
- Submersible flood lifters
- Leachate pumping systems for contaminated water
- Solar powered pumping systems
- Submersible bore hole pumps



*Pumping systems are the “heart” of all irrigation projects. If the pump system fails then there is a severe problem as no water is available.*

*Pumping systems must be designs with back up pumps and a maintenance program in place that will maintain a water supply to the plants and turf at all times.*



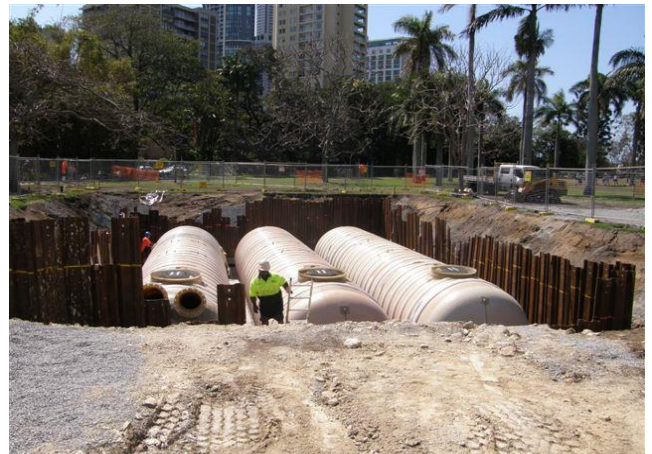
## Our Services

### **Water Management**

#### **Water Harvesting, Storage and Treatment**

With water conservation being important as never before, WET offers water management solutions based on the latest technology, information and design in all locations within Australia. And South East Asia. WET's design team can tailor make a system to suit all applications and budgets whilst always being conscious of impact on our environment, water supply and sustainability. Teamed up with the industry's most reputable suppliers, you can be sure that only quality products are used by our experienced staff.

- Above and below ground tanks
- Pumps
- Gross Pollutant Traps
- UV Treatment
- Water Testing





## Our Services

---

### **Water Management**

#### **Lake Management and Aeration**

Correct aeration design for ponds, lakes and dams, will increase dissolved oxygen levels and can prevent water from stratifying, therefore creating a stable environment for aquatic life.

Aeration will reduce noxious odours and taste, control and manage nutrient levels, prevents water from freezing over and assists in the natural self-cleaning process.

- Water Testing and Treatment
- Fountain Aeration Systems
- Desludging and Weed Control
- Decorative Fountains and Lights



## Some of Our Customers

---



Our





## Suppliers

Water Equipment Technology is able to provide such a high standard due to the strategic alliances that have been formed with Australia's leading manufacturers and suppliers of product used in our market.



## Partnerships and Affiliations

We believe that to enable our staff to be at the leading edge of industry technology and product awareness, we require the support of our suppliers to train and update our team in the latest products and industry trends. We achieve this by only dealing with reputable suppliers that deliver these requirements to our business. We also actively involve our team in industry meetings, shows and conferences. We are involved with other associations aligned to our business activities which not only boost our level of industry trends knowledge, which of course is passed onto you, but also allows us to voice our opinion and put something back into the industry ourselves.

We hold membership with the Irrigation Australia Limited (IAL), Golf Course Superintendence Association of Australia, Master Plumbers Association and the Australian Water Association.





## Workplace Health and Safety

Everyone at WET, from management to the front line, shares the same commitment to outstanding levels of health, safety and environmental performance. We are fully committed to ensuring a safe work place for our clients and employees and continually strive to improve our safety performance. We instil a cultural mindset in our company to achieve a safe work environment and put safety and the environment before commercial considerations.

This is achieved by identifying and rectifying any unsafe work conditions as well as promoting safe working practices. We understand that in order to achieve an outstanding safety and environmental performance and best practice, we must have a proven systematic WH&S system, a committed management team and a proactive workforce.

Water Equipment technology has implemented a comprehensive WH&S system across the business. All our employees are fully engaged in the system and help our clients to be aware of their responsibilities through company and project inductions, toolbox meetings, support with safe work method statements (SWMS) and Job Safety and Environment Analysis (JSEA).

**“Our company is driven by our values,  
we strive for zero harm to our environment”**

## Our Company

### Our people

At WET we recognise that our main asset is our people and therefore invest heavily in the development and retention of our employees. We believe that there is an undeniable correlation between happy employees and successful companies.

Our team of consultants are highly sort after and known for their diverse experience and knowledge across the full breadth of the water management and irrigation industry, with more than 35 years experience in the industry.

WET has a strong commitment to employing and mentoring apprentices and providing long term career paths for our team. We provide in-house and external training to ensure our employees are continually up-skilled in their respective fields of expertise. The development of our staff has allowed the company to provide career planning, opportunities

and promotion from within the organisation. As a result we now have a skilled, high performing, cohesive and loyal team culture.

“Our company is driven by values  
we want a balanced lifestyle for everyone”

